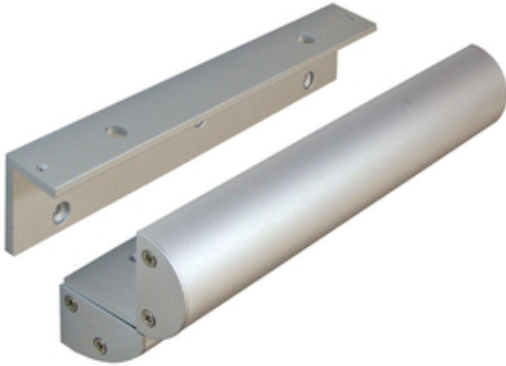


## Electro-Magnetic Locks

*Code: AMH590/ZA*

Architectural Z&L Bracket For Slimline Magnets



Various brackets are available such as Z & L brackets, L Brackets, architectural brackets and housing for the armature plate to be surface mounted on various door types including glass doors.

### Features & Benefits

- Z&L bracket with Architectural cover for inward opening doors
- 



Product Information

<b>Range</b>	Slimline
<b>Type Of Magnet</b>	Z & L Bracket
<b>Finish</b>	Satin Anodised Aluminium

